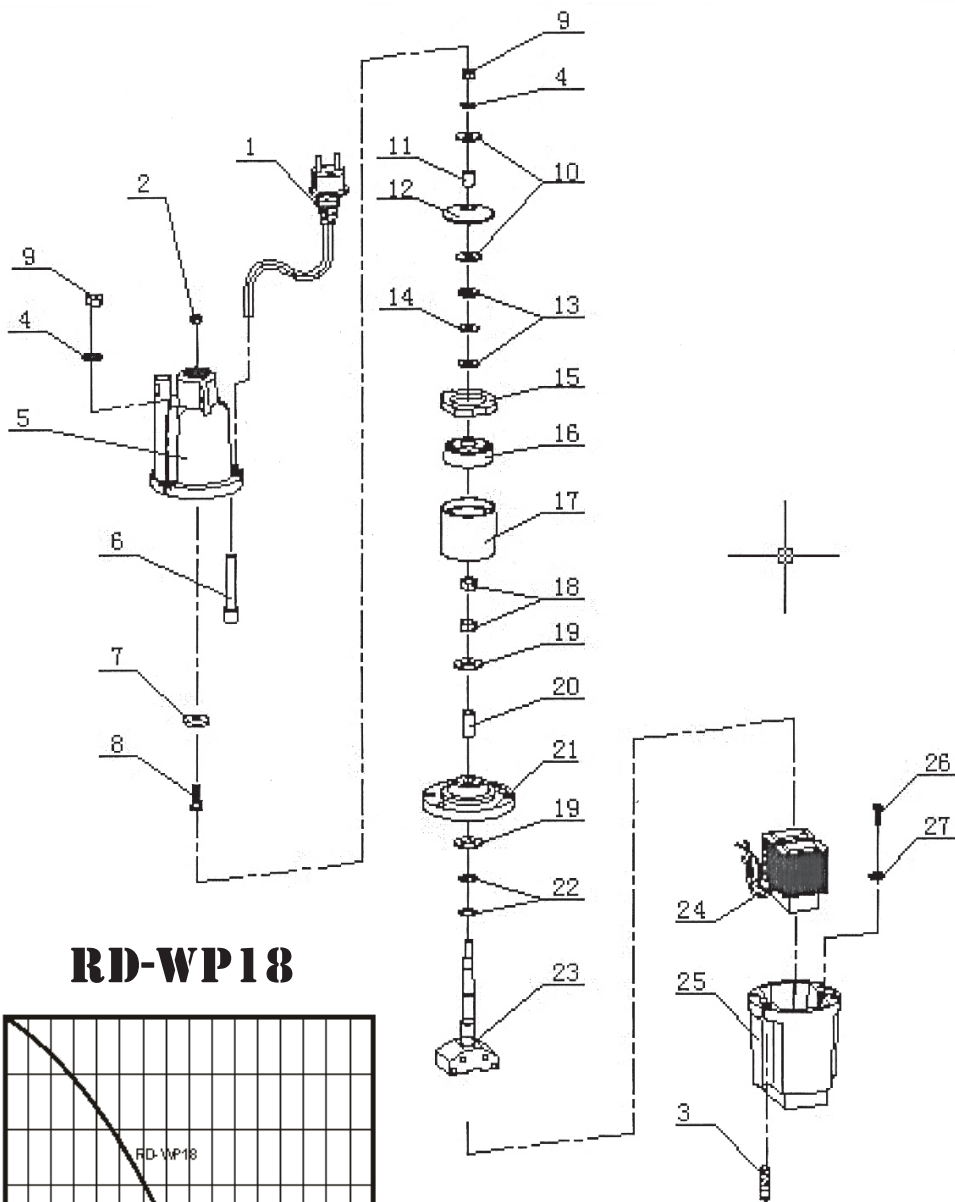
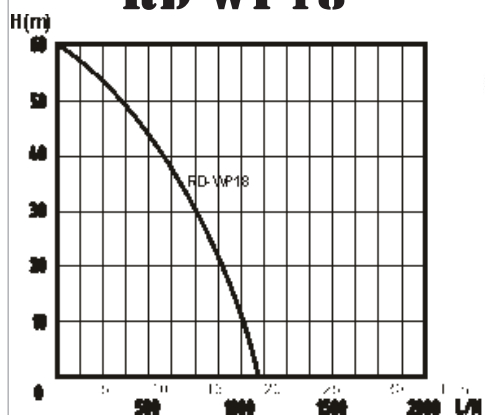


RD-WP18



RD-WP18



PARTS LIST RD-WP18

No	Name	Material	Note	Qty	specifications
1	Power cord			1	
2	Cover-type nut		M6	1	
3	Serrated lock nut		M6	1	
4	Locknut		M8	4	
5	On the pump	ZL102		1	
6	Cable sheath	EPDM		1	
7	Inlet rubber sheet	NR		1	
8	Axial screw	35	M6*22	1	
9	Locknut		M8	1	
10	Gasket		ø8*16*1.0	1	
11	Spherical washer	Q215	ø8.5*26.5*1.5	2	
12	Sucker bush	45	ø8*12*14	1	
13	Rubber suction cups	NR		1	
14	Adjust the gasket	Q215	ø8.0×D22×H2	2	(Reference number)
15	Adjust the gasket	Q215	ø8.0×D22×H0.5	2	(Reference number)
16	Gland	Nylon		1	
17	Rubber lining ring	NR		1	
18	Aluminum lining ring	ZL102		1	
19	Nut		M12	2	1-type hexagonal nut - fine tooth-A and Class B - color coating
20	Gasket	Q215	ø12.2×D31×H1.5	1	
21	Flanged bushing	45	ø12×18×16	1	
22	Rubber flange			1	
23	Gasket	Q215	ø12.2×D31×H1.5	1	
24	Adjust the gasket	Q215	d12.5×D26×H0.5	3	(Reference number)
25	Magnetic iron components			1	
26	Solenoid assembly			1	
27	Under the pump	ZL102		1	
28	Screw	304	M8×40	4	Hexagon socket head cap screws
29	Epoxy resin			114g	A, B ratio of 5:1
30	Wire connector	H62			
31	Yellow wax tube				
32	Heat shrinkable tube				
33	Ties				
34	Heat shrinkable tube				
35	Ties				